

## Pedestrian Information

**P**edestrians are required to use a sidewalk if available and accessible. They must walk on the left side of the road facing oncoming traffic if no sidewalk is available, unless the left side of the roadway or shoulder is obstructed or unsafe.

### Pedestrians have the right-of-way at:

- A signalized intersection, when
  - Crossing when the “WALK” signal is on.
  - Finishing their crossing on the flashing red hand or flashing “DON’T WALK” signal.
  - Crossing on a green signal in their direction of travel if no crossing signals are present.
- Mid-block crosswalks.
- 4-way stop-controlled intersections with sidewalks.

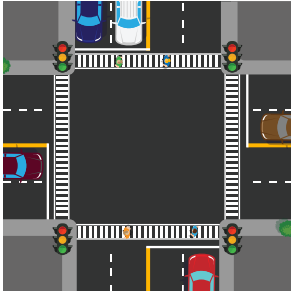


### Pedestrians **DO NOT** have the right-of-way if:

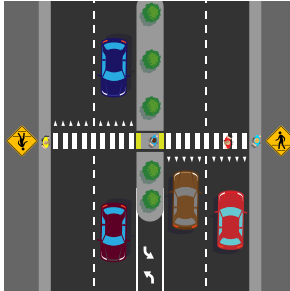
- The pedestrian crossing signal shows solid (non-flashing) “DON’T WALK” or the red hand is lit.
- They are crossing a road outside of an intersection or crosswalk.

# Pedestrian Information

**Examples of crosswalks:** Crosswalks with sidewalks can be both marked and unmarked.



*Marked Crosswalk*



*Marked Mid-block Crosswalk*



*Unmarked Crosswalk*

**Unmarked crosswalks exist on all legs of a four-way intersection with sidewalks, even if there is no traffic control in your direction of travel.** Before crossing any street, look for an acceptable gap in traffic.



**Scan to view Identifying Crosswalks video**



Instagram/walkbikesafetx



facebook/WalkBikeSafeTexas



twitter.com/WalkBikeSafeTX



YouTube search: Walk Bike Safe Texas

[www.walkbikesafetexas.org](http://www.walkbikesafetexas.org)